



MONTHLY MEMBERSHIP PROGRESS REPORT

District 14 N

Results as of: 02/28/2019

GMT: CINDY GREGG

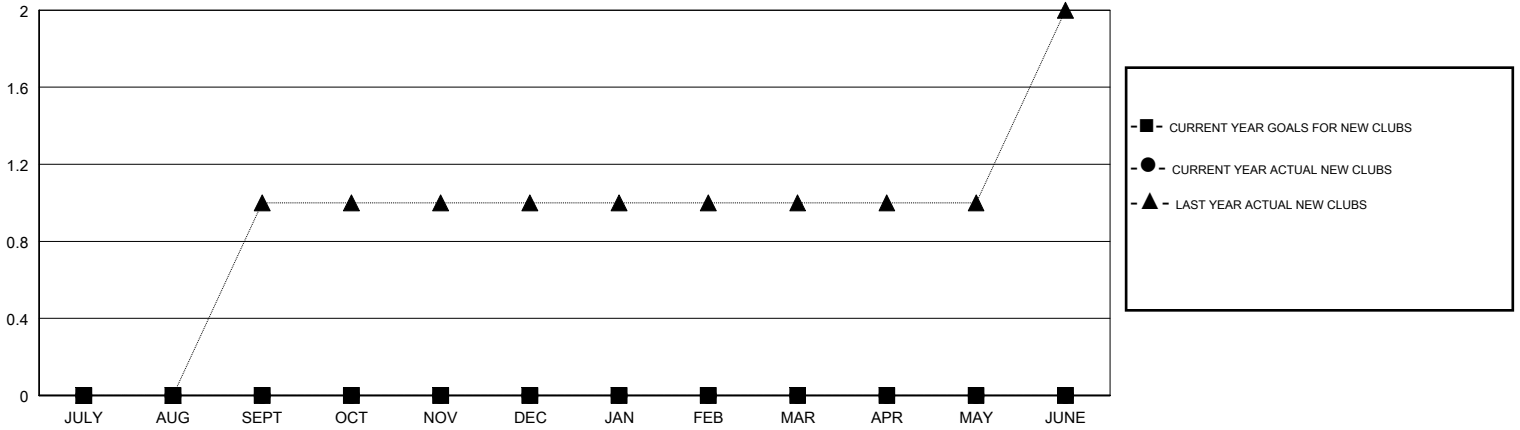
LOCATION PENNSYLVANIA

GMT CA

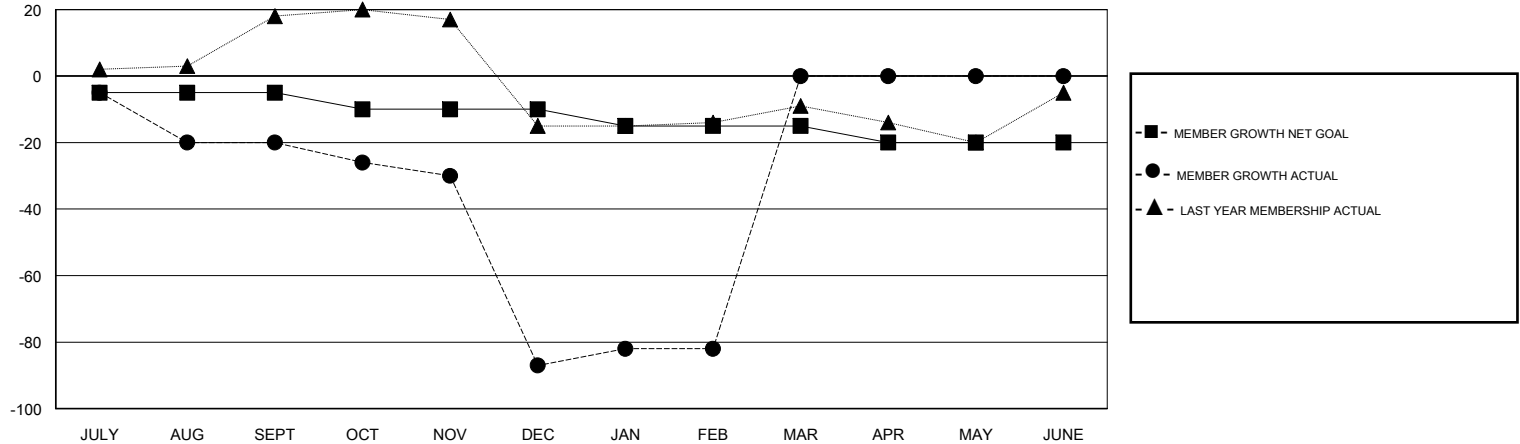
Clubs			
RESULTS FOR 2018-2019			
QUARTER	NEW CLUB GOAL	NEW CLUBS	DROPPED CLUBS
JULY/AUG/SEPT	0	0	1
OCT/NOV/DEC	0	0	1
JAN/FEB/MAR	0	0	1
APR/MAY/JUNE	0	0	0

Members			
RESULTS FOR 2018-2019			
QUARTER	MEMBER GROWTH NET GOAL	MEMBER GROWTH ACTUAL	DROPPED MEMBERS ACTUAL (including transfers)
JULY/AUG/SEPT	-5	9	26
OCT/NOV/DEC	-5	17	81
JAN/FEB/MAR	-5	14	7
APR/MAY/JUNE	-5	0	0

GOALS AND ACTUAL NEW CLUBS CUMULATIVE



GOALS AND ACTUAL MEMBERS CUMULATIVE



DROPPED CLUBS: 3	18 CLUBS OF 41 ADDED 1 OR MORE NEW MEMBERS	<u>GENDER DISTRIBUTION</u> MALE 710 (71.79%) FEMALE 279 (28.21%) Women Percentage Fiscal Year Goal: 30%
<u>DROPPED MEMBERS</u> DECEASED 19 CLUB CANCELLED 34 OTHER 61 TOTAL 114	CLICK HERE FOR CUMULATIVE MEMBERSHIP DATA	TOTAL FAMILY UNIT MEMBERS 159 FAMILY MEMBERS PAYING HALF DUES 83